

DULWICH

2025/26 | ISSUE 1

OFFICIAL PROGRAMME

HAMLET

£3

FOOTBALL CLUB



FEATURING

INTERVIEW WITH OUR
NEW MANAGER MARIA
TAVARES



TEAM TALK WITH NEW
SIGNING NEVE MAYES



FIND OUT ALL ABOUT OUR
NEW KIT PLUS OTHER CLUB
NEWS



Sunday 24th August 2025, 2pm KO

vs **CHESHAM UNITED**

WOMEN'S
NATIONAL
LEAGUE
DIV 1 SE



octopusenergy



Virtus



yonder

RISINGEDGE

SUPPORTING ALBRIGHTON FOOD BANK



DULWICH HAMLET FOOTBALL CLUB

PRESIDENT Jack Payne
VICE PRESIDENTS John Lawrence
Bill Azzi
Martin Eede
John Leahy

CHAIRMAN Ben Clasper
DIRECTORS Mel Hughes
Mark Scoltock
Mark Weatherald
Brittany Saylor
Nick Igoe

CLUB SECRETARY Joe Hickey
COMPANY SECRETARY Liam Hickey

WOMEN'S FIRST TEAM MANAGEMENT
TEAM MANAGER Maria Tavares
ASSISTANT MANAGER Leikam Ching
ASSISTANT MANAGER Alka Hirani
GOALKEEPING COACH Emanuel King
STRENGTH & CONDITIONING Sonia Relander
STRENGTH & CONDITIONING Richie Byrne

STAFF AND OFFICIALS
GENERAL MANAGER Mel Hughes
COMMERCIAL Clare Keeble
COMMUNITY Rob Hyneman
MEDIA & COMMS Kian Ward
TICKETING & OPS MANAGER Gavin Smith

PROGRAMME EDITORS David Rogers
Phil Passey

ON TODAY'S COVER
Liz O'Callaghan vs London City Lionesses
PHOTO: FIN BATEY

DAVID ROGERS FROM THE EDITOR

Good afternoon everyone, and a warm Champion Hill welcome to you and to the players, staff and supporters of today's visitors, Chesham United.

I hope you are all having a great Summer. It is that time of the year where we can enjoy a few games in the warm sunshine before Autumn arrives!

We start the new season with a new manager so we would like to welcome Maria and her team to the club.

In other news we have some new signings.

We would like to welcome to the club Liz O'Callaghan, Zhara Cheeseman, Neve Mayes, Lauren Heria and Jordyn Galway.

We hope you have a great time with us!

Let's have some noise from the Pepper Army today and take home three points!

Enjoy the read.
And of course, enjoy the game...

DULWICH HAMLET FOOTBALL CLUB LIMITED OWNERSHIP

Company Name Dulwich Hamlet Football Club Limited |
Company Type Private Limited Company – Limited by Shares
| **Registered in England and Wales Number** 02840930 | **Registered**
Office Champion Hill Stadium, Edgar Kail Way, East Dulwich,
London, SE22 8BD | **Directors** Benjamin Clasper,
Mark Weatherald, Melanie Hughes, Mark Scoltock, Nick Igoe, Brittany
Saylor, Liam Hickey | **Company Secretary** Liam Hickey | **Persons**
with Significant Interest / Control Benjamin Clasper, Dulwich
Hamlet Football Community Mutual Limited – trading as Dulwich
Hamlet Supporters' Trust | **Ground** Champion Hill Stadium, Edgar Kail
Way, East Dulwich, London, SE22 8BD **Telephone** 020 7501 9255

MARIA TAVARES A WORD FROM THE MANAGER



Good afternoon and welcome back to Champion Hill for today's game. A very warm welcome as always to our visitors, their staff, and supporters who have made the journey — it's never easy travelling on a Sunday and we truly value the effort you make to be part of the occasion.

Since I stepped into the role here at Dulwich Hamlet Women, the last few months have been a period of learning, growth, and real excitement. It has been a privilege to get to know this group of players and to see them develop as a squad. What has impressed me most is the determination and spirit they bring into every training session and matchday. You can see how much it means to them to represent this football club.

As a team, our identity is something we are still shaping. We want to play brave football — football that reflects energy, togetherness and ambition. That means being competitive in every moment, pushing ourselves to higher standards, but also enjoying the game and the journey that comes with it. All games count, and every point matters, but equally, it's



PHOTOGRAPH: FIN BATEY

important that we embrace the process of growing together as a team.

Today's match will be another good test of where we are in that journey. I'll be looking for us to bring intensity, focus, and positivity to every part of the game. We know there will be challenges, but that's what football is all about — finding ways to respond, sticking together, and making sure we leave everything on the pitch.

To our incredible supporters: thank you once again for being with us. The energy you bring to Champion Hill makes this place truly special. When you're behind us, it gives the players that extra lift to push through tired legs and tough

moments. Please keep that noise coming — it genuinely makes a difference, and the players always notice it.

We are building something together here — the players, the staff, and the fans. It won't always be perfect, but it will always be ours, and I can promise you that every single one of us will give everything for the badge.

Enjoy the match, enjoy the occasion, and let's keep enjoying this journey together.

Up the Hamlet!

Extension Specialists

Trusted by over 1,600 London home owners to design and build their extensions



Sunray Avenue, SE24



Scan the QR code, call us on 0207 495 6561 or email hello@buildteam.com to book your free Design Consultation.

buildteam[®]

BEN CLASPER CHAIRMAN NOTES



Welcome back to Champion Hill where I hope those who are here for the first time, whether as management, players or fans are quickly swept up in what I believe is one of the best experiences in the women's game.

It is something that has grown organically and so is a credit to those that have gone before and those who continue to turn out on the pitch and in the terraces to make Dulwich Hamlet Women FC so special.

Our second season at this level kicked off last week at newly promoted Luton Town, it was neither a great performance nor outcome but it is difficult to benchmark against sides that have come up.

Last season I felt we should have fared better against the group around us, including today's opponents Chesham United and you can add to that the likes of Actonians, Sudbury and Cambridge and it was not a surprise to see all of the clubs in that group, like us, leave empty handed on the opening day from match ups with sides that are better funded or part of much larger clubs.

PHOTOGRAPH: FIN BATEY



That's not an excuse, that's the reality of women's football and it is not something we complain about we just know the challenges are very different, our job as the custodians of the club is to grow at a pace that is sustainable and appoint people we believe can help us compete on the pitch during that journey.

Today marks Maria's first time out as manager in a competitive home game and so I hope you will join us in giving her and her staff a warm welcome, it is a hard role to come into, to take over a well-established group of players competing at a level that is the highest we have played at leaves very little room for error especially when the reality is that what was good enough to secure mid-table safety for clubs last season is more likely to

see them fighting against the drop this time around.

There is no comfort zone in this league.

We are pleased to see so many of the team staying on as it is never easy when a long-term manager departs and so I also hope to greet as many of you back to the stadium today.

The one thing I know we have that no amount of money can buy is what the Pepper Army have created and I know how much of that positivity swirls around the pitch to inspire the team so thank you for bringing that to the club and to the game and I look forward to seeing you today.

Ben

SIDELINES

THE LATEST NEWS FROM INSIDE CHAMPION HILL

A BIG WELCOME TO OUR NEW MANAGER, MARIA TAVARES

■ Maria joins Dulwich Hamlet for the 2025/26 season coming from Arsenal Women's Academy and after playing semi-professional in her time as a player, Maria is aiming to bring to the club a new spark and fresh ideas.

Prior to her time at Arsenal, she held head coaching roles at SOAS University of London and at Stonewall FC where she added trophies to both club's cabinets.

Maria is joined by Assistant managers, Leikam Ching and Alka Hirani.



MEET NEW SIGNINGS NEVE MAYES AND LAUREN HERIA

■ We're delighted to welcome Neve Mayes and Lauren Heria to Champion Hill after impressive pre season displays.

Neve aims to help with our striker issues and has previously played for Royston Town and Real Bedford.

Neve was the Women's President of the Cambridge University Association Football Club (CUAFC) during her time at Trinity Hall, Cambridge, where she studied History. She played as a centre forward and led the team to a fourth-place finish in the BUCS Midlands Tier 1 league in the 2022/23 season.

Neve is also a skilled trumpet player so would be useful to the Pepper Army!

Lauren started her earlier career with Leicester United and Charlton Athletic Academy before playing for Leyton Orient, London Bees and Lewes.

She is a founder of Equal Kicks, a consultancy to support women's football clubs and athletes in navigating commercial opportunities.

She has also been involved in advocacy for inclusivity, speaking at events like QueerFest in 2023 to promote LGBTQ+ inclusion in sports.



LIZ O'CALLAGHAN JOINS THE HAMLET

■ We would like to give a warm welcome to Liz O'Callaghan to Champion Hill.

Liz has spent the last few seasons playing for Ashford Town and has previously played from Cambridge City and Millwall Lionesses where she played both games against us in the 2021/22 season.

Liz was a goalscorer in a match that saw Ashford Town defeat London Seaward 7-0 to cement Seaward's relegation last season.

A BIG WELCOME TO ZHARA CHEESEMAN

■ We would also like to give a warm welcome to goalkeeper Zarah Cheeseman.

A Moroccan International, Zarah started her career with Brighton and Hove Albion and had a loan spell at Charlton Athletic before joining Lewes in 2020.

In the 2022 season she played for Colorado College Tigers in the United States.

Zarah started her senior international career with a 3-2 win over Mali on 14th June 2021.

HAMLET COMEDY RETURNS ON THE 4TH SEPTEMBER

■ After a top August bill that saw **Jamie Allerton** back on MC duties, **Michelle Shaugnessy** get the night warmed up, before being followed by **Eli Hart**, **Matthew Hutchinson**, **Jacob Hawley** and headliner **Laura Smyth**, comedy returns to the upstairs bar here at Dulwich Hamlet on Thursday September 4th.

The headliner next month will be **Felicity Ward** along with **Tom Mayhew**, who does fancy things on Radio 4 is making his Hamlet bow and we've got very welcome returns for two past faves **Steve Bugeja** and **John Meagher**.

Plus there's going to be short sets from two great acts we've stumbled across recently - **Maddie Coombe** and **Raj Poojara**. We also have **Alex Haddow** back on hosting duties!

Tickets here:
hamletcomedy.co.uk



PHOTO: INSTAGRAM

JORDYN GALWAY JOINS DULWICH HAMLET

■ Jordyn Galway has joined us from Camden Town to help strengthen our midfield.

Jordyn has impressed in our pre-season games under new manager, Maria Tavares.

Last season she scored the winning goal in Camden Town's 1-0 victory over Islington Borough in the Capital Cup, helping the team reach the quarter-finals.

GET SHIRTY...

THEY LOOK GREAT AND THE TEAM KEEP WINNING IN THEM
HERE'S THE STORY BEHIND OUR NEW 2025/26 KITS...

Many of you will have seen our new playing kits in action both home and away over recent weeks. Both shirts have been proving popular at the Mega Container run by the Supporters' Trust. Here's all you need to know about the historical inspiration behind the Hamlet's new kits...

Late last season, the Club approached the Dulwich Hamlet History Group for help with the design of the 2025/26 strips. The remit was simple: the home kit needed a historic link and should "reclaim pink" – with the exception of Corinthian Casuals, no one else plays in pink, so pink needed to feature prominently. Meanwhile the brief for the away kit was similarly simple – it was time to move away from the red, white and black of recent years.

At this stage, it will probably be useful for us to have a quick history lesson: When Hamlet were founded back in 1893, it was

agreed at the inaugural meeting that the Club's colours would be 'dark blue and red' with a "playing costume of a white sweater and dark knickers..." as shorts were then referred to.

Pink and blue were adopted later in recognition of the Lloyd brothers – two early players, William a founder member and Hugh who joined when the club went open – who it was said "taught us how to play". The brothers were old boys of Westminster School and Dulwich College and those two schools wore pink and navy blue respectively.

There were at least nine changes of 'playing costume' during the first 25 years or so of the Club, with a large number seeing the Hamlet team play in stripes. Then in 1927/28 the club changed to what would become the classic Hamlet shirt. One bold, solid navy blue stripe between pink sides with navy sleeves. This was worn virtually unchanged for the next forty years across five separate decades, a period that included three FA Amateur Cup wins in the 1930s as Dulwich Hamlet became "the most famous Amateur club in the country".

Then, in the late 1960s, there was a dramatic departure with a new look that saw dominant pink suddenly taking precedence over what was now royal blue – the traditional dark or navy blue having disappeared. The royal blue remained on the shorts, sleeves and collar only – with a round-neck replacing traditional buttons. In 1968, the blue went from the arms as Hamlet opted for a plain pink shirt with just blue collar and cuffs, although this somewhat drastic evolution did not last long. For a number of seasons the club badge also disappeared, replaced by just the club name or monogram and by the late 1970s manager Alan Smith's side played with white shorts and white socks. The club had adopted a 'penguin style shirt' with a bold pink strip straight down the middle by 1981. But with repeated washing over a season or two the pink in some of these 'modern' strips often faded badly, running with



the blue assuming a dull lavender or mid-grey shade. Perhaps it was because of this that as the decade wore on pink began to lose favour, still there, but often less prominent, mere trim on collar or cuffs until it regained favour in the mid-90s. Since there have been numerous incarnations, with takes on the classic Hamlet look and kits that have been predominantly pink - even 'shocking pink' at times - or perhaps more controversially, kits that have been predominantly navy blue.

Back to last summer: The History Group's initial idea was to re-visit the narrow stripes of Hamlet's 1925/26 kit. When a similar design appeared late last season against Canvey Island as a one-off fundraising strip to mark the centenary of our first meeting with German club Altona 93, it felt wrong to choose a near identical kit. So the focus then moved to the earliest known pink and blue kit – the halves of 1900/01 – to provide the inspiration for this season's home kit. But without a surviving shirt from that season what shade of pink or tone of blue should be used? It was here that the original 'Ernie Toser Shirt' worn in the 1937 FA Amateur Cup Final win over Leyton and the subsequent inspiration for the replica Dulwich shirt that used to be available online proved useful. The Club has attempted to match the pink and blue as closely as possible to the tones

PHOTOGRAPHS: PAUL HAMILTON

used for past classic shirts including Ernie's. However, modern fabrics are very different to the heavyweight cotton worn all those years ago, so making an exact match is difficult.

So what about that green and white check away kit? Let's return to the history lesson: For many years Hamlet's away kit was white with dark blue shorts and was rarely needed as a consequence of Hamlet's 'pink'n'blue' first choice being so distinctive. Hamlet have typically worn white or yellow second kits. More recently, a change strip of green and white or all red was preferred, although there was also a memorable detour to fluorescent yellow and anthracite. Over the last few years, following the genesis of the Freundschaft with German club Altona 93, red or white away kits with black trim have been favoured.

The History Group looked at other clubs who feature in Hamlet's history and settled on Red Star FC. 'Les Verts et Blancs' are a club Hamlet enjoy a good relationship with following a visit there by the late Mishi Morath. Hamlet first wore green and white as a change kit away against St Albans City in 1992/93. The pink and blue stripes of the home kit and the all yellow away kit both clashed with the City's blue and yellow stripes so a green and white kit was borrowed from the club physio's Sunday side as an alternative option. It served its purpose and for the following season a change kit of green and white striped shirts and green shorts was ordered. Further green and white change kits were then used into the mid-noughties.

But if green was the go for 2025/26 in what form? All green was out, due to colour blindness and halves containing too much white risked clashes. Green and white quarters nearly won, but the Club wanted to do something no-one could mistake for a Premier League club and Liverpool wore green and white quarters recently. The result was the green and white chequered pattern that also provides additional contrast with any striped or hooped opponents' shirts. Creative Director and Trust member Paul Hamilton then worked with manufacturer Hope & Glory to bring the 2025/26 playing kits to life. With thanks to Roger Deason and the Dulwich Hamlet FC History Group and Jack McInvoy at the Hamlet Historian.



DANNY MILLS

THE CLUB'S EDI OFFICER DISCUSSES THE WORK AHEAD FOR THE 2025/26 SEASON



PHOTO: KEELY MANN

accessibility and our continued efforts to diversify our fanbase. This year's priority will be to develop a new strategy informed by the survey and the ambitions of the club. I am very much looking forward to working with our key stakeholders to put something together that reflects Dulwich Hamlet Football Club.

Unfortunately, since my last column, we have been reminded that this work is needed more than ever. At the Women's Euros, England defender **Jess Carter** revealed she was scared to play in the Final due to fears of racial abuse. The England defender had suffered a torrid time after being targeted by racial abuse online, which forced her off social media during the tournament. Meanwhile, the Premier League opener between Liverpool and Bournemouth was stopped in the 28th minute after an allegation of a racist comment aimed at **Antoine Semenyo**; a 47-year-old man was ejected from Anfield. Semenyo was also subjected to racist abuse on Instagram that same night and has since shared some of the abuse on his story, with the caption: "When will it stop?"

Discrimination has no place in sport.

Tackling it requires:

- Speaking Up
- Standing Together
- and Creating A Culture where everyone can take part, be themselves, and thrive

Promoting equality, diversity, and inclusion in sport is not just about doing the right thing – it's about unlocking the full potential of individuals and teams, building stronger communities, and ensuring sport remains a positive and powerful force for everyone.

IN OUR HOUSE WE ARE ALL EQUAL.
Up The Hamlet!

Good afternoon Hamlet fans and welcome back to Champion Hill for another campaign where we are full of optimism for a positive season across all of our teams. Following on from last season there have been a lot of changes throughout the club, with new management teams for both the Men's and the Women's sides. I would like to welcome the new managers, staff and players that have joined the Club and wish them all the best for the season ahead.

It has been a positive start for the Men's team with three wins from the first three games which we hope will continue this afternoon against Canvey Island. The Women's team had a tough start against a good Luton Town side last weekend and we know they will want to bounce back quickly.

Since being appointed as **EDI Officer** over three years ago, I have been working hard behind the scenes to ensure our great club continues to be an inclusive environment where all feel welcome. In the off season I sat down with our Community Group so that we could start planning for this season. We have put together a plan for how we can continue to grow. Following on from the **Fan Engagement Survey** that we put out last season, there were some key highlights that we will be focusing on over the next few years particularly around

IFG.CO.UK

London's First Choice Principal Contractor



Virtus
Partners in construction

For over 24 years we have been London's go to fit out contractor. Our aim is to provide clients with absolute certainty in the supply of high quality interior fit-out and refurbishment projects.

Virtus



Scan Me!



Office Fit Out



Tailored workplace solutions

Refurbishment



Enhancing the existing and refreshing the everyday

Small Works



Small but mighty

Specialist Projects



Unique spaces, simplified

Retail



Eye-catching interiors

Residential



High-end homes built to last

020 7234 8600 • info@virtus-contracts.co.uk • @Virtuscontracts





DULWICH HAMLET FC

FORMED
STADIUM
CAPACITY
MANAGER
NICKNAME

2019
Champion Hill
3,334
Maria Tavares
The Pepper Army

This season will mark the seventh season for Dulwich Hamlet Women, since the players and staff of AFC Phoenix merged with the Hamlet in the summer of 2019.

Phoenix had worked its way through the ranks of the football pyramid to the London & South East Regional Women's League (Tier 5) after a title-winning 16-17 season.

After two consecutive second-place finishes and a cup final win, the decision was made to seek out the support the women playing for the club deserved, and merge with an existing men's club that matched their ethos and ambition. After playing their final league game of the 18-19 season at Champion Hill, narrowly losing to Kent Football United and missing out on promotion, the two clubs would link up and our women's side was born.

Heartbreak would hit the side in their first season, as manager Farouk Menia lost his battle with a long illness and passed away, with current manager Ryan Dempsey taking over and continuing Farouk's excellent work, guiding the side to two top place finishes, only for the pandemic to intervene, and QPR were chosen by the league for promotion instead of the Hamlet in 2021, despite us having a greater points-per-game record across the two seasons.

After the near-miss of promotion to the National League, optimism was

high ahead of 2021-22, but it would be a disappointing one for the side, as inconsistency saw them end the campaign in fifth.

However, a first cup final as the Hamlet was reached, losing 2-0 to Ashford Town in the Capital Senior Cup at Meadowbank in Dorking.

2022-23 brought with it the continued rise of the Pepper Army, our faithful group of supporters, with league attendances averaging 350.

The side would go on a club-equalling eight game unbeaten run during the spring, ending the season in fourth, and playing a match at the New Den on the final day of the season.

The highlight was undoubtedly the FA Cup run, with the side reaching the proper stages of the competition for the first time, with Aylesford then beat in Round One to set up a tie with Tier 3 Gillingham at home in Round Two.

In front of a record 631 fans, the Hamlet could not force an upset, losing 2-1. The 2023/24 season was undoubtedly the most successful season yet.

The team reached the second round of the FA Cup for the second season in a row losing to Billericay Town 2-1.

They would go on to win the league and get themselves promoted to the Women's National League South East on the last day of the



season beating Saltdean United FC 5-1 at Newhaven FC.

Last season saw Captain Brit Saylor retire from football and join the club's board of directors.

The last home game she played was a 3-0 win against Enfield FC when the club smashed the attendance figure with 1,142 coming through the gates.

The season saw average attendances rise to 450.

The 2024/25 season saw the Hamlet finish 8th in the League and reach the final of the Women's Capital Cup where they were defeated 2-0 by Arsenal.

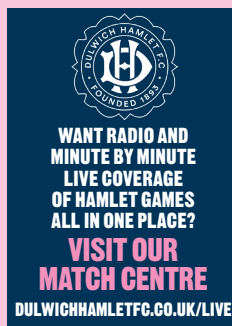
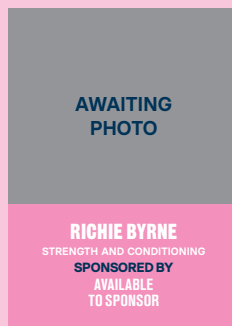
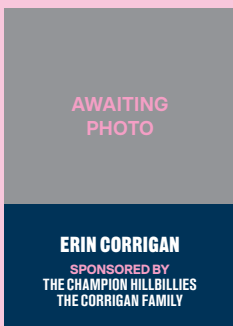
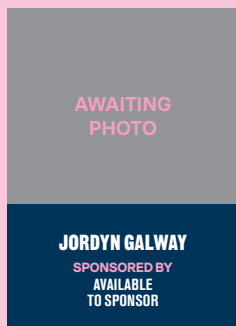
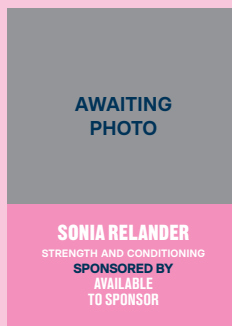
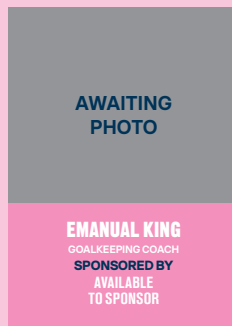
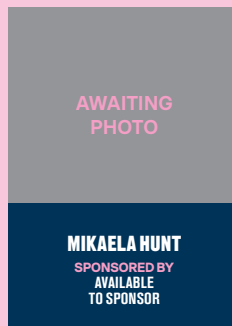
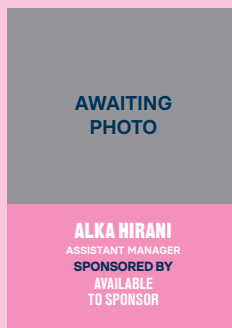
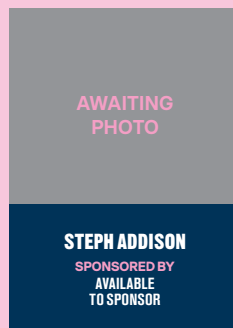
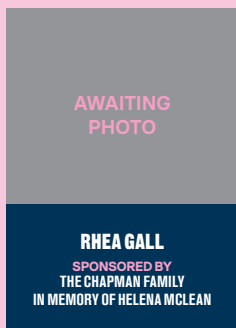
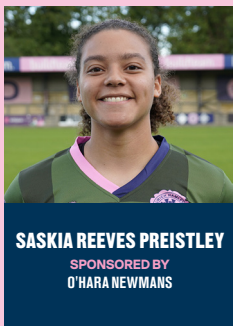
The end of the season saw manager Ryan Dempsey resign to pursue other opportunities and former Arsenal Academy manager Maria Tavares was appointed as manager for the 2025/26 season

The club have also run a Reserves side throughout their time as the Hamlet. Beginning in Division 1 of the Greater London Women's Football League in 2019, the side would earn promotion to the Premier Division at the end of that season, and despite the pandemic, would be chosen for successive promotions at the end of the 2020-21 campaign.

This meant they would join the London & South East Regional Women's League, competing one division below the First Team in Division One North, and would enjoy a very successful first season at the level, eventually finishing third behind Sutton United and Dorking Wanderers.

In the 2024/25 season the reserves reached their league cup final and played Clapton CFC at Maidstone United.

The game was controversially called off after 20 minutes and not replayed.



To sponsor a player, contact Clare Keeble on commercial@dulwichhamletfc.co.uk

To sponsor a player, contact Clare Keeble on commercial@dulwichhamletfc.co.uk

SUPPORTING ALBRIGHTON FOOD BANK

SUPPORTING ALBRIGHTON FOOD BANK



TODAY'S VISITORS CHESHAM UNITED

ESTABLISHED 1996
STADIUM THE MEADOW
CAPACITY 5,000
MANAGER MANI ASARE
NICKNAMES THE GENERALS



LEAGUE RESULTS

POSITION



2024/25 League Data – Women's National League Division 1

The earliest recorded women's football match in Chesham took place in 1895. On September 16, 1895, Chesham Town Football Club hosted the British Lady Footballers for a fundraising exhibition match at their ground, with kick-off at 5:15 PM.

The event was widely promoted along the Metropolitan Line, attracting spectators from London by train.

Tickets were sold in advance and a record 1,500 spectators gathered to watch Chesham's first known women's football match.

The players wore blue bloomers, blouses, and shin pads, with the Blues team in blue and white striped blouses and the Reds in red and white stripes.

The Blues defeated the Reds 5-2. A local newspaper reported that the play, while not particularly fast, was "exceedingly skilful" with notable teamwork.

The players expressed appreciation for the warm and enthusiastic reception from the Chesham crowd.

Following the Chesham match, the British Lady Footballers played additional exhibition games in Buckinghamshire, including at Loakes Park in High Wycombe on November 11, 1895, in Burnham in September 1896, and in Aylesbury on November 7, 1896.

The modern Chesham Women's team was formed in 1995.

Last season they finished 10th in the league out of a possible 12 and suffered some heavy defeats at the hands of Real Bedford 12-2 and a 10-0 lost to Chatham Town.



In the cups they made it through to the second qualifying round of the FA Cup after beating Montpellier Villa 5-2 before being knocked out by Fulham in a 6-0 defeat at Motspur Park.

In the first round of the WNL Plate they were knocked out after a 7-0 Wimbledon win.

Last season they beat Dulwich 1-0 at the Meadow and on their trip to Champion Hill the Hamlet beat the 3-1.

The team is managed by Mani Asare who joined the club for the 2024/25 season and his assistant is Anya Manek.

HEAD TO HEAD

09/03/25	A	The Meadow	L	1-0
24/04/25	H	Champion Hill	W	3-1

RECENT LEAGUE RESULTS

17/11/24	H	London Bees	L	0-4

RECENT FORM

DULWICH HAMLET FC



CHESHAM UNITED



Note: A club's most recent league result is listed far left



EST. 1987
**BESPOKE
WINDOWS**

PROUD LOCAL SPONSORS OF DULWICH HAMLET F.C.

344 Lordship Lane
East Dulwich SE22 8LZ
020 8693 1199



Scan here for a
free consultation

MEN'S TEAM UPDATE

CATCHING UP ON WHAT MARK DARCEY'S DULWICH
HAMLET MEN'S TEAM ARE UP TO.



Summer has been busy for the men's team and the results are bearing fruit.

Mark Darcey took over as Manager in May and the club has had a reset with a south London manager and a south London team which saw the return of former favourites Nyren Clunis and Anthony Cooke.

A pre-season trip to Altona in Hamburg, saw them draw 1-1 with our German friends, losing the game on penalties.

That was not to hold them back. They started the season in style at Champion Hill, beating league favourites Dartford 4-0 with a hat trick from Luke Wanadio and a goal from new signing Lonit Talla.

Next up was a Tuesday evening north London trip to Wingate and Finchley where

they came back with the three points with a goal from another new signing, Gaspar Mico to finish the game with a 1-0 win.

The following Saturday the Hamlet were on the road again with a summer seaside trip to Ramsgate, another potentially tough game.

The Hamlet brought all three points home with a 2-0 win with both goals from Luke Wanadio.

Our next home game will be at Champion Hill against Whitstable Town in the FA Cup first qualifying round on Saturday 30th August.

They have stamped their intentions on the Isthmian Premier League, let's see if we are up for the FA Cup!

TEAM TALK

NEVE MAYES

2025/26 SEASON
NEW
SIGNING



NAME NEVE MAYES
SHIRT NO. 9
POSITION FORWARD

Team you support and your childhood footballing hero?
Arsenal, Thierry Henry

When did you first come to Champion Hill?
When I joined at the beginning of the season

How did you come to join Dulwich Hamlet?
Moved to London and heard about the club. I was really excited by the community around the club and the strong fanbase and was keen to play at this level.

Where do you play and can you play anywhere else?
I feel that center forward is my best position but I can also play attacking

midfield.

What other clubs have you played for previously?
I played for Royston Town last season and Real Bedford the season before that. I spent most of my youth playing for Watford Ladies.

Any trophies in the cabinet?

I won the Hertfordshire County cup with Royston last season. The season before that I won the treble with Real Bedford, winning the league to get promoted to tier 4, league Cup and winning the county cup.

Who would you consider the best player you've ever played alongside and why?
The best player I have played with I would say is Fran Steele - able to control the tempo of the game



■ Neve's previous football club, Real Bedford

from centre midfield and a real presence both on and off the pitch. I played with her at university.

Best moment in football?
Coming back from a significant knee injury to score a hattrick in our Varsity match at university. It was an amazing feeling coming back from injury and winning with the team.

Tell us about the best goal you have scored?
Beat two players and strike from 20 yards out which went into the top corner

Favourite moment since joining Dulwich?
Winning away 2-1 at London Bees midweek! Proud of the girls and the work we have put in to get the result.

Hopes and ambitions for the new season ahead?
Hopes and ambitions- I want to win games, play good football and really show teams what we are about. I hope to get lots of goals and assists at the same time!

If you could change one rule in football, what would it be?
If I could change one rule- no offsides- would allow me to run a bit less



MEET THE MANAGER

DAVID ROGERS SPEAKS TO OUR NEW MANAGER MARIA TAVARES ABOUT JOINING THE HAMLET

Hello Maria, great to have you join Dulwich hamlet and have your team part of the next chapter of our history. We have some questions for you!

Tell us your earliest memories of football and who inspired you when you were young?

My earliest memory of football is when I realized I wasn't allowed to play like all my schoolmates just because I was a girl.

I felt disappointed, but then my father spoke with the coach at the local football club, and he agreed to let me join the practices.

I'll never forget the evening my dad came home and told me we needed to go to the shop. I asked what for, and he smiled and said we needed to buy football boots because I was joining the team.

In that moment, I felt so much love, joy, and excitement — it was as if a whole new world had opened up for me.

My family inspired me. They gave me the freedom to always be myself.

I was a bit of a tomboy, and I remember how special it felt to be allowed to dress however I liked, cut my hair the way I wanted, and play

with any toys I chose — without ever being judged or made to feel embarrassed.

That unconditional support shaped who I am today.

How did you get into playing and then management?

I've always played football. At school I took part in tournaments, and later I joined the boys' team in my hometown.

When I moved to the city for high school, living with my grandmother, I started looking for teams where I could play competitive football — and that's really where it all began.

Sport has been my life, and football, the greatest of them all, has been a constant presence throughout my 40 years on this planet.

I played for nearly 22 years in Portugal, where I'm from, and I feel as though I've been in and around the game every single day of my life.

I'm also the eldest of three daughters of a man who loved football deeply and who taught me so much of what I know about the game.

As a player, I gave everything every time I stepped onto the pitch, and I carry that same honesty and passion into my work today.

I demand commitment, kindness, and respect — because I believe the future of football depends on bringing these values back.

Too often they have been lost, but they are what shaped me as both a person and a player.



That is why I coach now: to help create a better version of the game I love.

I played at all levels and all types of this beautiful game, from playing street football as a kid and only girl to get to be seen from a PE teacher who bring me to a club to compete in the Portuguese Women's League, having playing futsal for a few years and even beach football in summer tournaments, I had the privilege to have it all.

Football runs through my blood. It's the essence of my DNA.

You are the only female manager in our league which is something you must be proud of! What needs to happen to get more women into football management and what barriers still stand in the way?

Yes, I am proud to be the only female manager in our league, but I don't want to be the only one for long.

Football is for everyone, and that must also be reflected in leadership.

To see more women in management, we need opportunities to be made visible and accessible. That means clubs and federations investing in female coaches, offering mentoring, and creating clear pathways into leadership roles.

Representation matters — when young girls see women managing teams, they begin to believe it's possible for them too.

The barriers are still real. There are stereotypes about what women can or cannot do in football, and those need to be challenged.

Sometimes the biggest obstacle is simply being given the chance — being trusted with responsibility in a game that has been male-dominated for so long.

But I believe things are changing. With



PHOTO: MARIA WITH FATHER, JOÃO TAVARES

PHOTO CREDIT: KIAN WARD

persistence, support, and the right structures in place, more women will step into these roles, and the game will be richer for it.

What attracted you to Dulwich Hamlet?

The club's identity and values. This is a community club with a big heart — one that stands for more than just football.

The sense of belonging, inclusivity, and passion that surrounds Dulwich is unique, and you can feel it as soon as you walk through the gates.

On the pitch, the ambition and commitment to playing good football was something I immediately connected with.

Off the pitch, the culture of togetherness and the incredible support from the fans makes this a very special place to be. For me, Dulwich Hamlet isn't just a club — it's a movement, and being part of it is both inspiring and motivating.

What are your thoughts on pre-season and which new players should we be looking out for?

Pre-season is always a really important time. It's not just about fitness, but about building rhythm, understanding, and togetherness within the squad.

It gives us the chance to test new ideas, integrate players, and strengthen the bonds that will carry us through the season.

For me, it's also about setting standards — how we work, how we support each other, and how we represent the club every time we step on the pitch.

As for new players, I don't want to give too much away too early — I think the fans will



enjoy discovering that for themselves!

What I can say is that we've brought in and kept from last season individuals who not only add quality on the pitch but also the right character off it. They share our values and our ambition and they work hard. I'm excited for supporters to see them in action — I think they'll make a real impact.

Which team do you support? (apart from our own!)

Sporting Clube de Portugal, back home.

You have won silverware at SOAS University of London and Stonewall FC. What has been your favourite management moment?

Winning silverware with SOAS University of London and Stonewall FC are moments I'll always treasure.

Lifting a trophy is special, of course, but for me the real joy comes from the journey — seeing a group of players grow together, overcome challenges, and achieve something as a team.



If I had to choose a favourite moment, it would be that feeling of pride when I look around at the players and see the smiles, the celebrations, and the knowledge that all the hard work has paid off.

Those moments remind me why I do this — football has the power to bring people together, to create memories that last forever.

That, more than the silverware itself, is what I value most.

Best piece of advice you have been given?

The best piece of advice I've ever been given is: "Always stay true to yourself." In football and in life, there will always be pressure, opinions, and challenges, but if you stay authentic — to your values, your passion, and your way of working — you'll never lose your direction.

That advice has guided me through every stage of my journey as a manager.

Favourite place to go for a holiday/break?

Japan. What I love most is the culture — people are incredibly respectful of everyone and everything around them.

There's a strong sense of community, social harmony, and care for the world we share.

Everything is clean and well looked after, and that creates such a peaceful, inspiring environment.

It's a place where I feel both relaxed and uplifted every time I visit.

Thank you Maria, it was great to talk to you and good luck to you and the team for the rest of the season!

WELCOME FROM THE COMMUNITY TEAM

ROB HYNEMAN INTRODUCES THE WORK OF THE CLUB'S COMMUNITY TEAM FOR THE 2025/26 SEASON...

The new season is underway and we are looking forward to another year of football and community. This season we have a wide ranging programme of initiatives planned – some familiar, some new – designed to support and connect with the wider community of which we are a part. Whether it's youth outreach, local partnerships, or match day activities, we remain committed to making a positive impact beyond the pitch to ensure that Champion Hill remains a place for everyone.

■ THE ALBRIGHTON CENTRE...

The Club is pleased to confirm the continuation of our partnership with The Albrighton Centre for the 2025/26 season. This ongoing collaboration reflects our commitment to supporting the local community and strengthening the ties between the football

club and the people living around our stadium.

The Albrighton Centre, located just across the road from the ground, plays a vital role in the local area by offering a range of support services to individuals and families.

One of its key initiatives is the **Albrighton Community Fridge**, which provides free access to surplus food and helps reduce waste. Since its launch in 2018, the fridge has become an essential resource – particularly during the pandemic – and continues to meet growing demand amid the cost of living crisis.

Supporters can contribute by donating essential items at home matches or volunteering with the Centre. **Donations can be dropped off at the main reception at Champion Hill on matchdays or directly at The Albrighton Centre.** Keep an eye out on our socials for any special requests that the centre may be requesting as the season progresses.

■ MASCOTS WANTED...

Every home match day, we invite children from local schools, from nearby youth football teams and community groups, or even just passionate young Dulwich Hamlet fans, to walk out with the players before kick-off at Champion Hill. We believe passionately that every child should have the chance to experience live football and to feel a real part of their local club. That's why we offer this opportunity completely **FREE** of charge.

HOW TO GET INVOLVED

1) View Our Fixtures

You can view upcoming fixtures for both our Men's and Women's Teams via the club website. Just jump online and visit either... dulwichhamletfc.co.uk/fixtures/mens-fixtures-and-tickets

OR

dulwichhamletfc.co.uk/fixtures/womens-fixtures-and-tickets

2) Choose a Match

Select a home fixture that works for you and the group you wish to get along to a match...

3) Register Your Interest

Use the QR Codes below to fill in the forms that let us know that you'd like to take part by. A member of the Community Team will then be in touch to confirm your place...

4) Matchday Details

On the day of the game, arrive at the tunnel 15 minutes before kick-off to meet our Community Team. You'll then walk out with the players, take part in the pre-match line-up and have your photo taken on the pitch. Whether you're signing up as an individual or representing a group we look forward to welcoming you to Champion Hill!

SIGN UP FOR THE 2025/26 SEASON HERE

MEN'S FIXTURES



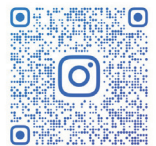
WOMEN'S FIXTURES



■ GET IN CONTACT...

For more information about any of our initiatives or to get involved, please get in contact with us via our email address: community@dulwichhamletfc.co.uk

You can also keep up to date with all of the Club's important community work via our Instagram Page: [@DHFCCommunity](https://www.instagram.com/DHFCCommunity)



THE ISTHMIAN LEAGUE RESPECT STATEMENT

The Isthmian Football League strongly supports the Football Association's statement that there should be a zero-tolerance approach against all forms of discrimination. Any inappropriate conduct toward others, including but not limited to that based on an individual's sex, race, colour, weight, size, religion and belief, national origin, age, marital or domestic - partnership status, disability, sexual orientation, or gender identity or expression, will not be tolerated and will be reported to the relevant authorities.

The Isthmian League and our Member Clubs are committed to promoting equity and equality by treating all people fairly and with respect, by recognising that inequalities may exist, by taking steps to address them and providing access and opportunities for all members of our communities.

MATCHDAY SPONSORSHIP

We still have opportunities remaining for supporters or local companies to be Dulwich Hamlet sponsors during the 2025/26 season.

You can choose to sponsor either a full match or just simply the match ball...

BALL SPONSOR £150

Includes two tickets, young fans leading the team out, a match ball signed by the first team and both match day programme and pre-match announcements.

MATCH DAY SPONSOR £350

Includes four tickets, boardroom access, reserved seating, food and drink, a mention in the match day programme and a pre-match announcement.

For more details please contact commercial@dulwichhamletfc.co.uk

HARVEY & WHEELER

ESTABLISHED 1855



Proud supporter of DHFC

MAKE YOUR MOVE IN ANY SEASON



Scan the QR Code to arrange a free valuation to sell or let and find your new home

Harvey & Wheeler is your independent, family run estate agency serving Dulwich and the surrounding area.

020 8693 4321 • harveywheeler.com •
33 Dulwich Village, SE21 7BN

Cancelled match due to collapsed wall.

Not Covered by Rising Edge.

Our policies cover D&O, Crime, EPL, PTL, NEDs' and W&t: www.risingedge.co

Specialty
Insurance
Reimagined



DON'T STAY ON THE SIDELINES.

JOIN THE TEAM



DULWICH HAMLET SUPPORTERS' TRUST OWN 33.49% OF THE CLUB, WHICH GIVES US A SIGNIFICANT INFLUENCE IN HOW IT OPERATES. IT MEANS WE'RE ABLE TO SCRUTINISE EVERYTHING THE CLUB DOES, INCLUDING ITS ACCOUNTS, AND MAKE SURE IT'S RUN FOR THE BENEFIT OF SUPPORTERS.

IN TIMES OF CRISIS, IT MEANS WE'RE ABLE TO BRING FANS TOGETHER AND MAKE SURE THE CLUB HAS A FUTURE. AND IN NORMAL TIMES, IT MEANS WE'RE ABLE TO LISTEN TO ANY PROBLEMS FANS HAVE, AND WORK WITH THE CLUB TO SOLVE THEM.

SUPPORT US BY JOINING DHST AT THE MEGASHED OR ONLINE AT [DHST.ORG.UK/JOIN](https://dhst.org.uk/join)



SUPPORTERS' TRUST NEWS

Hurrah! Football is back. New season, new manager, new hope. We open our home account today with our guests Chesham United. Start as you mean to go on, and come and holler with The Pepper Army over in the Toilets Opposite stand.

You'll find lots of the songs in the online songbook: <https://dhst.org.uk/songbook/>. Or just lean in, pick a note and hope for the best. It's a judgement-free space. Thank you to all the staff and volunteers making sure today's match runs smoothly and safely. We couldn't do it without you!

JOIN THE TRUST FOR 2025/26

If you're a Trust member and haven't renewed since the end of last season, your membership will have lapsed.

Renew your membership to keep receiving our comms, enjoying local discounts and voting in Trust elections. Drop us a line at membership@dhst.org.uk to check.

If you're not a member, let's solve that! Sign up at the Trust Shed, or online at www.dhst.org.uk. It's an annual £10 for adults, £5 concessions and £2 for under-18s.

And if you want to get more involved, we're urgently seeking a new Trust Board Secretary to keep us functioning properly. Ask us about it at the MegaContainer.



NEW MERCHANDISE DROPS MUGS, SHIRTS, SWEATERS AND MORE...

We've got some spanky new merch!

As well as 2025/26 replica shirts (including our dazzling green and white away jerseys), we've put some of our best-loved t-shirt designs from last season onto a new range of mugs.

And we've got a smart new t-shirt design, inspired by Bruce Springsteen's legendary debut record.

Stock up at the MegaContainer before and after the game, and at half time.

TODAY'S TRIVIA TEASER...

The earliest recorded women's football match in Chesham took place in 1895. What kit were they wearing?

A) shorts and shirts (B) blouses and bloomers (C) shin pads and hats

Last Programme Answer – (B) Twice

DULWICH HAMLET FC HONOURS

FA AMATEUR CUP

Winners (4)

1919/20, 1931/32, 1933/34, 1936/37

Semi-finalists (4)

1908/09, 1921/22, 1928/29, 1934/35, 1955/56

FA TROPHY

Quarter-finalists (2)

1979/80, 2016/17

ISTHMIAN LEAGUE

Champions (4)

1919/20, 1925/26, 1932/33, 1948/49

Runners-up (8)

1921/22, 1923/24, 1929/30, 1930/31, 1933/34, 1946/47, 1958/59, 2017/18

Division One champions 1977/78

Division One South champions 2012/13

Premier Division play-off winners 2017/18

Premier Division play-off finalists

2010/11, 2012/13

ISTHMIAN LEAGUE CUP

Finalists (2) 2010/11, 2012/13

ISTHMIAN CHARITY SHIELD

Winners 2013/14

LONDON SENIOR CUP

Winners (5)

1924/25, 1938/39, 1949/40, 1983/84, 2003/04

Finalists (5)

1905/06, 1907/08, 1920/21, 1927/28, 2001/02

LONDON CHALLENGE CUP

Winners 1998/99

Finalists (2) 1991/92, 1999/2000

OTHER HONOURS

Norwood Charity Cup 1889/1900; Surrey Charity Shield 1902/03, 1905/06; South London Charity Cup 1918/19; Kings College Hospital Cup 1924/25 (also joint winners 1921/22, 1923/24, 1926/27); Bromley Hospital Cup 1921/22, 1927/28, 1928/29, 1948/49); Liege Tournament Cup 1928/29; Guernsey Victory Cup 1932/33, 1948/49; Connaught Hospital Cup 1932/33 (joint winners); Oxford Hospital Cup 1935/36; Wycombe Hospital Cup 1953/43; Harris Cup 1954/55, 1955/56; Mayes Memorial Cup 1959/60, 1960/61, 1964/65; Kennedy Cup 1996/97, 1998/99, 2003/04, 2007/08; Muir Memorial Cup (joint winners 2000/01)

SURREY SENIOR CUP

Winners (16 times - record)

1904/05, 1905/06, 1908/09, 1909/10, 1919/20, 1922/23, 1924/35, 1927/28, 1933/34, 1936/37, 1946/47, 1949/50, 1957/58, 1958/59, 1973/73, 1974/75

Finalists 1911/12, 1931/32, 1932/33, 1937/38, 1950/51, 1967/68

LONDON CHARITY CUP

Winners (9) 1919/20, 1920/21, 1922/23,

1925/26, 1927/28, 1928/29, 1947/48, 1956/57, 1957/58

Joint Winners (3) 1910/11, 1923/24, 1930/31

SURREY SENIOR SHIELD

Winners 1972/73

SURREY CENTENARY SHIELD

Winners 1977/78

SOUTH OF THAMES CUP

Winners (4)

1956/57, 1957/58, 1958/59, 1959/60

SOUTHERN COMBINATION CUP

Winners 1973/74

SOUTHERN SUBURBAN LEAGUE

Champions (2) 1901/02, 1903/04

WOMEN'S SENIOR CUP

Finalists 2021/22

LONDON AND SE WOMEN'S PREMIER LEAGUE

Champions 2023/24

WOMEN'S CAPITAL CUP

Runners-up 2024/25

2025/26 RESULTS & STANDINGS

THE FA WOMEN'S NATIONAL LEAGUE DIVISION ONE SOUTH EAST

#		P	W	D	L	GD	PTS
1	QUEENS PARK RANGERS	1	1	0	0	+7	3
2	CHATHAM TOWN	1	1	0	0	+4	3
3	LONDON BEES	1	1	0	0	+4	3
4	NORWICH CITY	1	1	0	0	+4	3
5	LUTON TOWN	1	1	0	0	+2	3
6	FULHAM	1	1	0	0	+1	3
7	CAMBRIDGE UNITED	1	0	0	1	-1	0
8	DULWICH HAMLET	1	0	0	1	-2	0
9	AFC SUDBURY	1	0	0	1	-4	0
10	ACTONIANS	1	0	0	1	-4	0
11	CHESHAM UNITED	1	0	0	1	-4	0
12	MILTON KEYNES DONS	1	0	0	1	-7	0

Information correct up to and including Friday 22/08/2025

SUNDAY 12th OCTOBER

Actonians v Chatham Town ---
 Cambridge United v QPR ---
 Fulham v Chesham United ---
 Luton Town v AFC Sudbury ---
 Norwich City v MK Dons ---
 Dulwich Hamlet v London Bees ---

SUNDAY 21st SEPTEMBER

AFC Sudbury v Actonians ---
 Chesham United v Cambridge United ---
 London Bees v Norwich City ---
 QPR v Dulwich Hamlet ---
 Chatham Town v Fulham ---
 MK Dons v Luton Town ---

SUNDAY 14th SEPTEMBER

Actonians v MK Dons ---
 AFC Sudbury v Chesham United ---
 Dulwich Hamlet v Fulham ---
 London Bees v Chatham Town ---
 Norwich City v Luton Town ---
 QPR v Chesham United ---

SUNDAY 31st AUGUST

Chesham United v AFC Sudbury ---
 Fulham v Norwich City ---
 Luton Town v Actonians ---
 MK Dons v London Bees ---
 Chatham Town v QPR ---
 Cambridge United v Dulwich Hamlet ---

SUNDAY 24th AUGUST

Actonians v Fulham ---
 Cambridge United v Luton Town ---
 Dulwich Hamlet v Chesham United ---
 London Bees v AFC Sudbury ---
 QPR vs Norwich City ---
 Chatham Town vs MK Dons ---

SUNDAY 17th AUGUST

AFC Sudbury v Chatham Town 1-5
 Chesham United v London Bees 0-4
 Fulham v Cambridge United 2-1
 Luton Town v Dulwich Hamlet 3-1
 MK Dons v QPR 0-7

NEXT UP AWAY CAMBRIDGE UTD

Sunday 3rd August 2025
 Women's National League
 KO 2pm

Rowley Park Stadium,
 Kester Way, St. Neots,
 Cambridgeshire PE19 6SN

COMING UP HOME PALACE ACADEMY

Tuesday 7th September 2025
 FAWNL CUP
 KO 7.45pm

Champion Hill Stadium,
 Edgar Kail Way, East Dulwich,
 London, SE22 8DB

COMING UP HOME FULHAM

Saturday 14th September 2025
 Women's National League
 KO 2pm

Champion Hill Stadium,
 Edgar Kail Way, East Dulwich,
 London, SE22 8DB

FOLLOW
 HAMLET
 AWAY

2025/26 WOMEN'S FIXTURES & RESULTS

DATE	H/A	OPPOSITION	COMP	RES	ATT	STARTING XI	SUBSTITUTES										
AUGUST																	
Sun 17	A	Luton Town	WNL	3-1	210	Gwyn West	Jodie Lodge	Asia Harbour Brown	Rhea Gall	Liz O'Callaghan	Lauren Heria	Neve Mayes	Francis Weir	Phoebe Leitch	Mikaela Hunt	Lily Price	Reeves Priestley, M.Searle, T'Searle, Taylor, Hickman, Monkman, Addison
Weds 20	A	London Bees	LC														
Sun 24	H	CHESHAM UNITED	WNL														
Sun 31	A	Cambridge United	WNL														
SEPTEMBER																	
Sun 07	H	CRYSTAL PALACE PGA	LC														
Sun 14	H	FULHAM	WNL														
Sun 21	A	Queens Park Rangers	WNL														
Sun 28	H	HASHTAG UNITED	LC														
OCTOBER																	
Sun 05	-	WOMEN'S FA CUP 3Q	WFAC														
Sun 12	H	LONDON BEES	WNL														
Sun 19	-	LEAGUE CUP / PLATE R1	LC														
Sun 26	-	WOMEN'S FA CUP R1	WFAC														
Weds 29	A	Chatham Town	WNL														
NOVEMBER																	
Sun 02	H	MK DONS	WNL														
Sun 09	-	LEAGUE CUP / PLATE R2	LC														
Sun 16	A	AFC Sudbury	WNL														
Sun 23	-	WOMEN'S FA CUP R2	WFAC														
Sun 30	H	ACTONIANS	WNL														
DECEMBER																	
Sun 07	A	Norwich City	WNL														
Sun 14	H	LUTON TOWN	WNL														
Sun 14	-	WOMEN'S FA CUP R3	WFAC														
Sun 21	-	TBC	-														
JANUARY																	
Sun 04	A	Chesham United	WNL														
Sun 11	-	LEAGUE CUP / PLATE QF	LC														
Sun 18	-	WOMEN'S FA CUP R4	WFAC														
Sun 25	A	Fulham	WNL														
FEBRUARY																	
Sun 01	-	LEAGUE CUP / PLATE SF	LC														
Sun 08	H	CAMBRIDGE UNITED	WNL														
Sun 15	-	COUNTY CUP	WCC														
Wed 18	H	CHATHAM TOWN	WNL														
Sun 22	A	London Bees	WNL														
Sun 22	-	WOMEN'S FA CUP R5	WFAC														
MARCH																	
Sun 01	-	TBC	-														
Sun 08	H	QUEENS PARK RANGERS	WNL														
Sun 15	-	COUNTY CUP	WCC														
Sun 22	A	MK Dons	WNL														
Sun 29	H	AFC SUDBURY	WNL														
Sun 22	-	LEAGUE CUP / PLATE F	LC														
APRIL																	
Sun 23	-	WOMEN'S FA CUP QF	WFAC														
Sun 12	H	NORWICH CITY	WNL														
Sun 19	-	COUNTY CUP	WCC														
Sun 26	A	Actonians	WNL														
MAY																	
Sun 23	-	WOMEN'S FA CUP SF	WFAC														
Sun 23	-	WOMEN'S FA CUP F	WFAC														



SNAPSHOT
SUNDAY 10th AUGUST 2025
DULWICH HAMLET vs LEWES
 (LEWES WON 7-0)



*Hamlet score is first in results column; WNL = Women's National League Division One South East; WFAC = Women's FA Cup; LC = League Cup; WCC = Women's Capital Cup; Results & Fixtures correct up to and including Xxxxxday XXth Mmmm 2025

* = Penalty Shoot-Out Decided Winner

2025/26 DHFC PLAYER STATS

PLAYER NAME	LEAGUE			CUP			2025/26 TOTAL		CAREER TOTAL	
	STARTS	SUB	GOALS	STARTS	SUB	GOALS	APPS	GOALS	APPS	GOALS
STEPH ADDISON	0	1	0	0	0	0	1	0	9	0
MIKAEKA BEYNON	1	0	1	0	0	0	1	1	1	1
ZAHRA CHEESEMAN	0	0	0	0	0	0	0	0	0	0
ERIN CORRIGAN	0	0	0	0	0	0	0	0	83	10
MINNIE CRUTWELL	0	0	0	0	0	0	0	0	83	4
JESSICA FRANCIS-WEIR	1	0	0	0	0	0	1	0	11	1
RHEA GALL	1	0	0	0	0	0	1	0	96	6
JORDAN GALWAY	0	0	0	0	0	0	0	0	0	0
ASIA HARBOUR BROWN	1	0	0	0	0	0	1	0	78	12
LAUREN HERIA	1	0	0	0	0	0	1	0	1	0
CEYLON HICKMAN	0	0	0	0	0	0	0	0	93	4
PHOEBE LEITCH	1	0	0	0	0	0	1	0	29	4
JODIE LODGE	1	0	0	0	0	0	1	0	58	1
NEVE MAYES	1	0	0	0	0	0	1	0	1	0
LUCY MONKMAN	0	1	0	0	0	0	1	0	98	26
ELIZABETH O'CALLAGHAN	1	0	0	0	0	0	1	0	1	0
LILY PRICE	1	0	0	0	0	0	1	0	92	22
SASKIA REEVES-PRIESTLEY	0	0	0	0	0	0	0	0	95	0
SUMMER ROBERTS	0	0	0	0	0	0	0	0	33	25
MORGAN SEARLE	0	0	0	0	0	0	0	0	56	2
TIA SEARLE	0	1	0	0	0	0	1	0	54	5
NATALIE TAYLOR	0	1	0	0	0	0	1	0	30	7
GWYN WEST	1	0	0	0	0	0	1	0	5	0

IPW1
PROPER PRINTING.

PROUD SUPPORTERS OF THE
DULWICH HAMLET
FOOTBALL CLUB

PRINT GOALS

- BESPOKE BOXES & PACKAGING
- MENUS & TABLEWARE
- LABELS & STICKERS
- WINDOW DISPLAYS & CUT VINYL PRINTING
- DIGITAL PRINTING
- DIGITAL WITH METALLIC
- LITHO & THERMOGRAPHIC PRINTING
- FOIL PRINTING, EMBOSING & DIE CUTTING
- FULL STATIONERY & PRINT FINISHING
- MOUNTING & ENCAPSULATION
- LARGE FORMAT, POSTERS & ROLLER BANNERS

WE'VE GOT THIS!
020 7437 3200
HELLO@IPW1.CO.UK
IPW1.CO.UK



IPW1 - PROPER PRINTING

late summer **DULWICH**
HAMLET
FOOTBALL CLUB



<p>Sat 30th Aug. 3.00pm vs Whitstable Town</p> <p>MEN'S FA CUP Q1</p>	<p>Mon 1st Sept. 7.45pm vs Rusthall F.C.</p> <p>FA YOUTH CUP</p>	<p>Sat 6th Sept. 3.00pm vs Welling United</p> <p>MEN'S LEAGUE</p>	<p>Sun 7th Sept. 2.00pm vs Crystal Palace FC</p> <p>WOMEN'S LEAGUE CUP</p>
<p>Sat 13th Sept. 3.00pm vs Brentwood Town</p> <p>MEN'S LEAGUE</p>	<p>Sun 14th Sept. 2.00pm vs Fulham</p> <p>WOMEN'S LEAGUE</p>	<p>Sat 27th Sept. 3.00pm vs Aveley</p> <p>MEN'S LEAGUE</p>	<p>Sun 28th Sept. 2.00pm vs Hashtag Utd.</p> <p>WOMEN'S LEAGUE CUP</p>

Men's

Women's

Match Tickets

Could change due to FA Cup fixtures, check online for updates.

Could change due to FA Cup fixtures, check online for updates.

VIEWS FROM THE TOILETS OPPOSITE

HARRY ATTRIDGE

There isn't much that I feel I need: a London Black and a souvlaki. With the Rabble and the Pepper Army, I only want to stay in this league.

I don't care for fancy things, or to lose again by seven-nil. But to cheer on the pink and blue, I will with heart from Champion Hill. I don't mean to seem like I care about material things (like Motspur Park). I just want four goals and a good league start, for our girls.

We arrive, dear reader, at the precipice of this new season, and it is a privilege to once again place words to digital paper, in advance of standing alongside you under the roof of the Toilets Opposite stand.

I say "new season", but such a statement admittedly brushes over the fact that this season is already seven days old.

Fair play to the Hamlet fans who made the journey up to what is generously termed "Luton", last Sunday.

With what felt like a high level of predeterminism, the author here was in no state to attend. Not going to that game could have been falsely dressed up under the pretence of saving energies for this opening home fixture.

But the truth was that the prior day's excursion to Ramsgate, in the charming company of many fine friends who also follow both Hamlet teams, had seen a such a wealth of footballing, and sea-swimming, and pinting delights that getting out of



bed the next morning was quite the steep ask. So all the more power to those of our number who did get to that FAWNLD0SE season opener!

The DHFCW pre-season itinerary for yours truly consisted exclusively of a typically delicious excursion down to Lewes, two Sundays ago.

Let us not dwell upon the on-field outcome of that day, but instead take in our stride that feeling of a proper old-fashioned Pepper Army away day. Reckon we've got a few good'un's in us, this season.

For these next couple of months, let us soak up what remains of the setting Sunday sun, before eventually hooking up some pink and blue lights around our banners and once again becoming the Pepper Army After Dark.

Keep your summer scarves to hand and around your necks for the moment, but be ready to dust off those old woollen faithfuls before long.

IN OUR HOUSE WE ARE ALL EQUAL

DEFECTED™

